



Annual Report 2009

....Serving Calgarians for over 44 Years....

*PARTIALLY FUNDED
BY*



Calgary Meals on Wheels
3610 Macleod Trail SE, Calgary, AB T2G 2P9
403-243-2834
www.MealsOnWheels.com



2009 BOARD OF DIRECTORS

OFFICERS

Eileen Gukert – President
Rick Grol – Vice President
Allan Pedden – Treasurer
Eileen Butler – Secretary

DIRECTORS

Karen Boyd
Dick Brown
Loren Falkenberg
Daryl Genereux
Carolyn Guichon-Pearce
Anne Kleffner
Margaret Lounds
Dan Shannon
Bruce Wade



2009 BOARD COMMITTEES

- ❖ *Capital Project*
- ❖ *Client Services*
- ❖ *Finance & Audit*
- ❖ *Governance*
- ❖ *Human Resources*
- ❖ *Marketing*

Sincere appreciation is extended to all Board and Committee Members for their commitment of time and effort over the past year in stewarding organizational direction and contributing to the successful performance and service orientation of Calgary Meals on Wheels.



MEMBERSHIP

The Membership of Calgary Meals on Wheels selects the Board of Directors to be responsible for the policies and stewardship of Calgary Meals on Wheels. Membership is open to individuals and groups who wish to support the mission of Calgary Meals on Wheels. The annual Membership fee is currently \$5.00 for individuals and \$10.00 for groups. Members are entitled to attend the Annual General Meeting; those holding a Membership at the end of the fiscal year for which the Meeting is being held are eligible to vote.





VISION

A caring community, working together to enhance health and wellness

MISSION

Calgary Meals on Wheels promotes health and supports the choice of independence by preparing and delivering nutritious, affordable meals to people in need of our service and by enhancing the community safety net.

GUIDING PRINCIPLES

Calgary Meals on Wheels is committed to excellence

- ❖ In service
- ❖ In relationships
- ❖ In performance
- ❖ In business
- ❖ In representing community

We take pride in the quality and scope of service provided to clients and the community. We respect the efforts of our professional and operational teams who strive to ensure client and service satisfaction is in harmony with achieving our mission.

VALUES

- ❖ We value each other -- employees, volunteers, colleagues, associates, donors, funders.
- ❖ We value our clients and strive to hear and understand their needs.
- ❖ We value all members of our Calgary Meals on Wheels team. We listen, share ideas, respect each other and our diverse range of experiences, and are sensitive to confidential matters.
- ❖ We value an environment that encourages personal growth, caring and acting with integrity and thoughtful judgment.
- ❖ We value a work culture that offers recognition, appreciation, opportunity for innovation and change, and fun.
- ❖ We value the opportunity to serve our community, the privilege of donor relationships and the satisfaction of ensuring solid business ethics and leadership in meeting the responsibilities for client services, volunteer support, donor investment and personnel performance.



MESSAGE FROM THE PRESIDENT AND EXECUTIVE DIRECTOR

The Year in Review

Calgary Meals on Wheels is committed to continuing to build a strong and sustainable organization – one that is well positioned and ready to meet the demands of our changing times. The past year presented us with many challenges, but we are proud of what we accomplished. We are pleased to have this opportunity to share some of the year's highlights.

In our remarkable 44th year of operations, Calgary Meals on Wheels continued to serve the needs of our community. Our employees and volunteers prepared, portioned, packaged and delivered more than 447,500 meals (40% of which were special diets for people with various medical conditions). Our active volunteer corps of 641 individuals contributed 42,895 hours of service. We continued our record of never denying a request for meals and never missing a delivery. We continue to maintain a high level of care and compassion for our clients.

Calgary Meals on Wheels was not immune from the downturn in the economy in 2009. While operating results were slightly negative (loss of \$36,708), overall there was an excess of revenues over expenses of \$977,029. These positive results were due to ongoing funding from Family Community Support Services and United Way of Calgary and Area, as well as financial support from foundations, businesses, service clubs and individual donors.

2009 saw the retirement of Bill Storey, Executive Director after 11 years of valuable and committed service to Calgary Meals on Wheels. After a professional search throughout the summer, we were pleased to announce the appointment of Janice Curtis as Executive Director. Janice brings a strong management background and over 18 years experience in leading organizations, including in the food services industry. Her corporate background and sound decision making are valuable assets to the Agency.

During the past year, we continued to raise our profile in the community, including radio campaigns on QR77 and Shine FM, and a Community Appeal supplement in the Calgary Herald. We continue to make new friends in the community and the result of this work will become even more evident in the years to come. We continue to receive support from Mayor Dave Bronconnier, Premier Ed Stelmach, city Aldermen, provincial MLAs, federal MPs, and from Prime Minister Stephen Harper and his family.

A fundraising tea, generously sponsored by Val and Jim McFarland, was held at their home in September. Mrs. Laureen Harper, Mrs. Marie Stelmach and Alderman John Mar attended the tea. Mrs. Harper also participated in our second annual "Government Gives Gladly" day on December 23. She worked with our staff and volunteers to portion and package meals, and helped load the vans despite the cold December temperature. MLAs Harry Chase and Paul Hinman, Aldermen Joe Ceci and John Mar also lent a hand in the kitchen and on meal deliveries. We remain grateful for the participation of each of these individuals and we look forward to their continued support.



The glue holding our organization together is people. Our Agency is blessed to have a strong corps of dedicated volunteers: those who have been with us since day one as well as new volunteers who join each month. On behalf of the Board and Management, we would like to thank and acknowledge each and every one of you. Our volunteers' efforts really exemplify Calgarians helping Calgarians.

On behalf of the Board and Management, we would like to thank our valued employees. The Calgary Meals on Wheels team is talented, motivated and committed to the organization's success. We have first-rate people who deliver excellent performance despite any uncertain external conditions they may face.

Following eight years of valuable service to Calgary Meals on Wheels, Dick Brown and Anne Kleffner are retiring from the Board of Directors, having served the maximum number of terms. After the completion of a two year term of service, Dan Shannon has decided not to seek re-election to the Board. In addition, Rick Grol and Margaret Lounds resigned from the Board during the past year. We would like to take this opportunity to thank Dick, Anne, Dan, Rick and Margaret for their valuable service and their many contributions to the organization; they will be missed by all at Calgary Meals on Wheels.

We would like to thank the entire Board and all the Committee members for their diligence and commitment.

Finally, to our members, thank you for your continued support.

Respectfully,

Eileen Gukert
President

Janice Curtis
Executive Director



TREASURER'S REPORT

In 2009 the most significant issue facing the Society was still the relocation of our plant. Not only is our existing infrastructure reaching beyond the limits of its useful life, but our current capacity and technology limit our prospects for pursuing new opportunities to serve our community.

As of December 31, 2009 the capitalized cost of the building is \$7,259,289, along with additional assets in the building fund of \$69,678. An additional \$2,378,917 in funding has been raised for total assets related to the building project of \$9,707,884. Upon any disposal of the property, the outstanding mortgage of \$883,654 would have to be retired and an additional \$8,380 of accrued liabilities, mostly interest, would have to be settled. This leaves a net asset value of \$8,815,850 for the building project.

Besides the net assets for the building project, the Society has additional net capital assets of \$498,313 mostly related to the fleet. Finally the Society has \$178,345 of unrestricted operating net assets available to support future operations. Considering the small loss of \$36,708 for the 2009 operations (\$3,766 for 2008), these net assets represent a somewhat limited cushion to support the Society's future operations. Although the staff of Calgary Meals on Wheels was very diligent in meeting the challenges of the past year, operating expenditures were \$2,583,115 for the year versus \$2,540,163 in 2008. The aging facility and equipment will continue to introduce additional operating inefficiencies until they are replaced.

Stable funding from our key partners, Family & Community Support Services and United Way of Calgary and Area, provided a major source of operating revenues. Operating donations showed an improvement to \$595,090 in the 2009 year versus \$534,206 in 2008 because of the support of numerous foundations, businesses, service clubs and individual donors. However capital fundraising, which is essentially a one-time relationship, took a dramatic drop in 2009 mostly related to donations to the building project, which were down to \$1,121,542 in 2009 versus \$2,593,887 in 2008.

As indicated in Note 14 to the Financial Statements, in March of 2010 the Board of Directors made the difficult decision to sell the previously acquired building and land, and search for a less costly alternative site. Based on location, there is a clear premium available for the existing facility. A reduction in site costs will help bridge the current funding gap, enabling the Agency to commence work on a new facility in a more timely and responsible fashion.

I would like to thank all of the volunteers, supporters and staff who made the delivery of our critical service possible during the past year.

Respectfully,

Allan Pedden
Treasurer



APPRECIATING OUR VOLUNTEERS

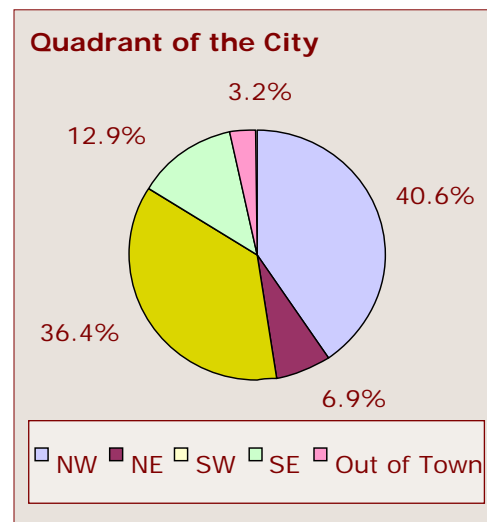
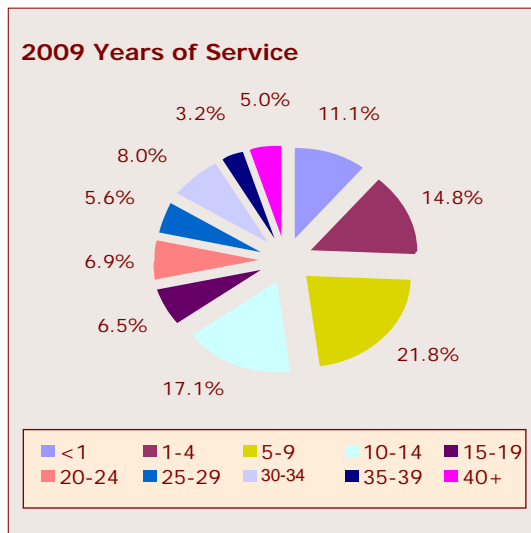
Integral to the service of Calgary Meals on Wheels is the gift afforded to us by hundreds of men and women who have chosen to give us their time, talents, and personal dedication.

With deep and abiding respect, the organization acknowledges the depth of our volunteers' contributions. By delivering meals and providing a special connection to each and every client visited, our volunteers exemplify *compassion in action* and uphold Calgary Meals on Wheels' Mission to improve the quality of life of the citizens we are privileged to serve.

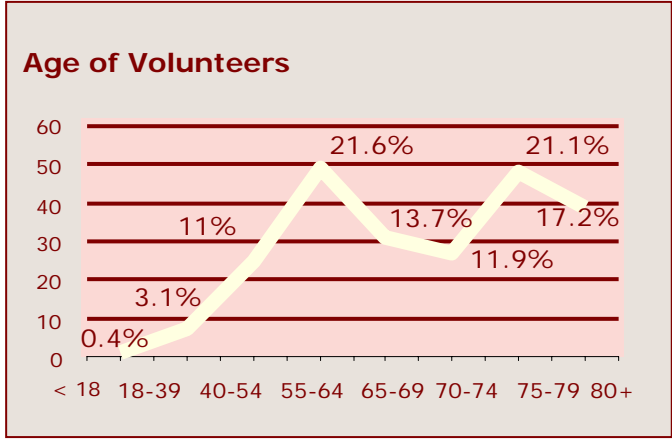
2009 Outstanding Volunteer Service Award Recipients

In appreciation of our volunteers' incredible gift, Calgary Meals on Wheels has established special recognition awards honouring volunteers nominated by their peers for their loyalty, caring and outstanding service:

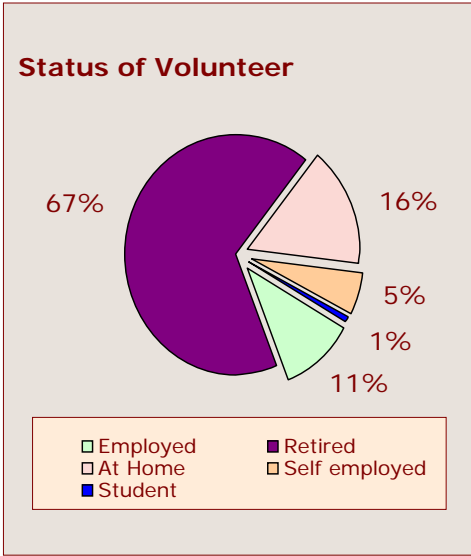
- | | |
|------------------|---------------------|
| Mary Boser | Jerry Burke |
| Gisela Durlacher | Roger Haynes |
| John Sander | Gene and Anne Swain |
| | Judy Webb |



*During 2009
641 active volunteers contributed 42,895 hours of service*



Female: 59.7 %
 Male: 40.3 %



2009 Patricia Bourne Memorial Award Recipient:

The late Patricia Bourne was President of CMOW from 1978 to 1981. In recognition of her volunteer commitment to the organization, and in her memory, the Bourne family established a fund to enable CMOW to hold a spring luncheon to honour volunteers and present an annual award in her name to a volunteer who has made an exemplary contribution to CMOW.

Bernie and June Hills

Bernie and June Hills have volunteered a combined total of 10 years and in 2008 together contributed 374 hours. They deliver meals faithfully twice a week on Monday and Friday, and sometimes even up to 4 or 5 days a week. If one is not available, the other is always willing and able; they are more than happy to help where we need it the most.

Not only do we benefit, the clients benefit the most in receiving the meals. Bernie and June also assist the volunteer coordinators in training new volunteers, patiently guiding them through correct delivery procedures.

They have been involved in raising awareness, and assisted with our 2008 fundraising gala, especially June donating her own artwork for the silent auctions. Together their commitment, dedication, caring nature, and acts of kindness exemplify compassion to action in everyday life.



Roberta Martell

Roberta Martell has been an active volunteer since the year 2000. She delivers meals every Thursday in the NE area and helps other days when needed. Over the years she has dedicated time to special events, and recruited and trained new volunteers; in 2008, she contributed 214 volunteer hours.

Her talents and passion have been seen in her involvement on the committee for our annual fundraising gala. Roberta spearheaded the silent auction, recruiting her husband, family and friends to the cause. With months of planning and organizing leading up to the event, she enhanced the presentation of auction items, which in turn led to increased fundraising for Calgary Meals on Wheels.

Roberta works well with staff and other volunteers, and has developed friendships for a lifetime. We acknowledge her gift of time, and her dedication and compassion in helping others in the community; she is an inspiration to all.

Adopt a Route Partners

ADOPT-A-ROUTE PARTNERS

Corporate

- ❖ Centron Group of Companies
- ❖ Hopewell Group of Companies
- ❖ IBM Canada Ltd.
- ❖ O'Rourke Engineering Ltd.
- ❖ Shell Canada Limited

Church Groups

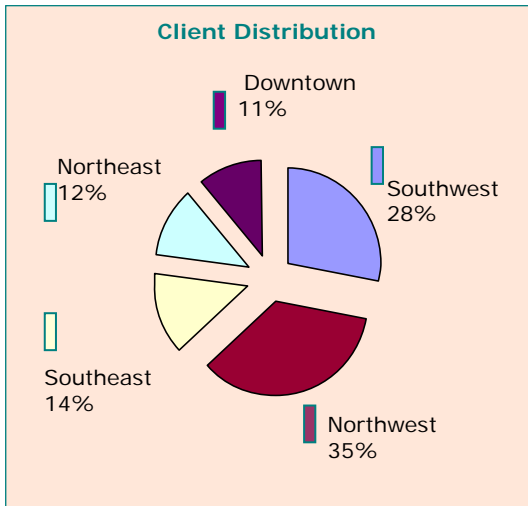
- ❖ Advent Lutheran Church
- ❖ Foothills Lutheran Church
- ❖ Holy Name Parish
- ❖ Hope Lutheran Church
- ❖ Knox Presbyterian
- ❖ St. Bonaventure Parish
- ❖ St. Laurence Anglican
- ❖ Varsity Acres Presbyterian

We would like to especially recognize the Calgary Meals on Wheels Adopt-A-Route Partners. These volunteer groups are corporate businesses, service clubs, and faith communities that have taken on a route once a week throughout the year.

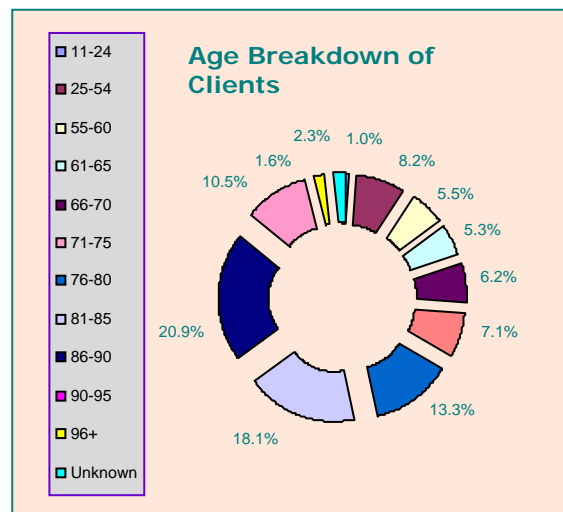
Each group has a coordinator who schedules teams of 2 on a rotating cycle to deliver meals to our clients. This partnership is an excellent choice for those wishing to volunteer in a friendly and supportive group atmosphere.

CLIENTS SERVED

In 2009, Calgary Meals on Wheels prepared, packaged and delivered a variety of regular and special diet meals, averaging **1789 meals per day**:

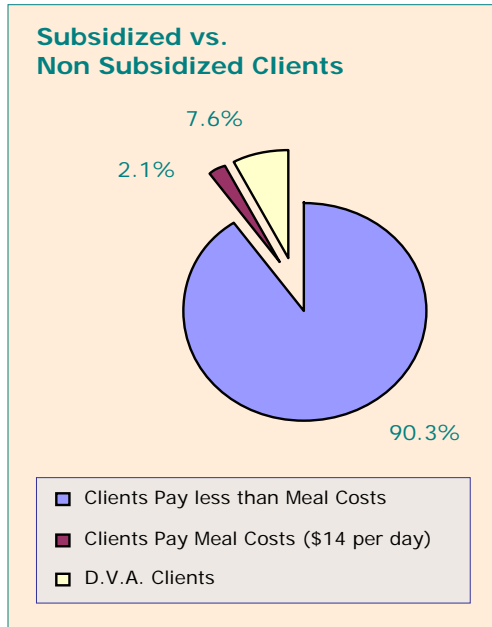


Standard Service



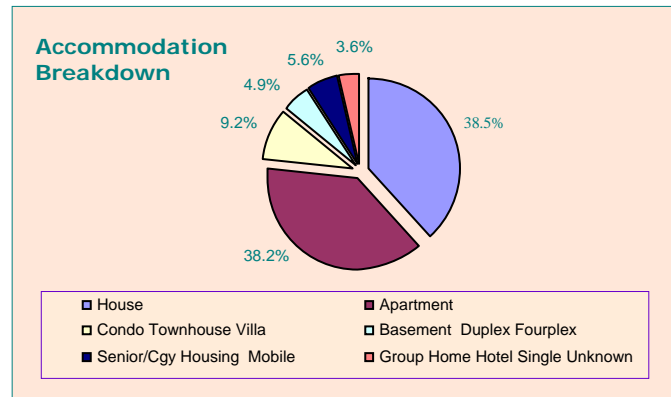
Including

- ❖ 292,710 standard service meals to clients' homes
- ❖ 54,000 bag lunches to the Calgary Drop-In Centre for the working homeless
- ❖ 51,763 servings of hot hearty soup to more than 920 children in 9 elementary schools during the school year
- ❖ 24,175 Magic Meals, easy to warm up frozen dinners
- ❖ 4,656 Chopsticks on Wheels
- ❖ 2,549 Food & Fellowship and Food & Caring meals
- ❖ 4,100 ad hoc meals to agencies or groups, such as *Aventa*, *Alpha House* and *Inn From The Cold*.



Calgary Meals on Wheels is a vital and unique service because:

- ❖ we prepare the nutritious healthy tasty meals in our own kitchen
- ❖ we are able to accommodate special diets such as diabetic, celiac and renal
- ❖ our volunteers provide daily door-to-door delivery of the meals
- ❖ our clients pay according to their income
- ❖ our clients do not need a referral



Because of our service, 1669 clients can stay in their homes, remain a part of their community, avoid malnutrition, and minimize their use of our overly burdened health care system.

We are helping our clients preserve their health, well-being, and independence, and offering their families peace of mind.



2009 DONOR SUPPORT

COMPANIES

1332942 ALBERTA LTD
1341125 Alberta Ltd
366180 Alberta Ltd
950070 Alberta Ltd.
Adele Woolsey Studio
Agilent Employee Giving Campaign
Alberta Culture and Community Spirit
Alberta Mortgage Brokers Association
Alberta Motor Association
Almandine Resources Inc.
Alpine Drywall (Calgary) Ltd
Alter Energy
Alumni Crafts
Amalgamated Transit Union Local 583
AON Reed Stenhouse Inc
ARC Financial Corp

ATCO

- ATCO Gas
- ATCO Noise Management Ltd.
- ATCO Pipelines
- ATCO Power Canada Ltd.
- ATCO Structures Inc

Automotive Industries Association
Bank of Montreal
Baymag Inc
BECTELL Investments Limited
Blue Heart Consulting
BMO Employee Charitable Foundation Alberta/NWT Region
Bonavista Petroleum Ltd.
Bonterra Energy Corp
The Congregation of the Brothers of Our Lady of Lourdes-Holy Rosary Account
Bow River Lodge No.1 GRA
Breaker Energy Ltd
Brine-Add Fluids Ltd

THE CALGARY FOUNDATION

- The Cunningham Lee Sullivan Fund
- The Mardon Fund

- Patricia Bourne Memorial Fund

Calgary Habitat for Humanity
Calgary Kotobuki Society
Calgary North Hill Lions Club
Calgary South Rotary Partners
Canada Brokerlink Inc
Canyon Plumbing & Heating Ltd
Cardel Homes
Catherine Butler Fund
Cenovus Energy Inc
Centron Group of Companies
Chinook Refrigeration & Air Conditioning Ltd
Chubb Insurance Company of Canada
The Church of Good Shepherd
CIBC Children's Foundation
The City of Calgary
The City of Calgary - FCSS
Clearwater Charitable Foundation
Colin and Margaret MacDonald Family Fund
Computer Sciences Canada Inc.
ConocoPhillips Canada
Contours Hair Design
Corpus Christi C.W.L.
Desk and Derrick Club of Calgary
Devon Canada Corporation
Dora Y Lam Professional Corporation
Dorcas Group Women's Fellowship of Grace Presbyterian Church
Dox Flow Through Fund
Dr Catherine McKercher Prof. Corp.
Dr. J. K. Mulloy Elementary School, Grade 6 Students
Dr Kenneth and Marion Symington Memorial Fund
Eaton Corporation
Enbridge Inc.
EnCana Cares Foundation
Encana Corporation

EnCana Corporation – Matching Gifts Program
Endowment Horizons, ULC
Enerflex Systems Ltd.
Estate of Jafferalli Jaffer
Estate of Marion Winnifred Panabaker
Estate of Percy McKee
Estate of Violet Cawthorn F.P. Mannix
Fairborne Energy Ltd.
Foothills Lutheran Church
Gary Sorenson & The Staff of the Companies
Gas Liquids Engineering Ltd.
The Gift Basket Boutique
Gizella Davis Real Estate Inc
GM Bain Real Estate Services Ltd
Gold Wing Touring Association
Good Shepherd Church MWF
Grace Presbyterian Women's Fellowship
Greek Ladies Philoptohos Society
Harry & Martha Cohen Foundation
Harry Rosen Inc
Harry Hamilton Memorial Fund
Hearn Family Foundation
Highwood Lutheran Church
Holy Name Parish
Holy Spirit Charitable Society
The Hunter Family Foundation
Husky Energy
Hydro Quebec
IBM Employee's Charitable Fund Donations Committee
Ida Sutherland Memorial Fund
IHS Energy (Canada) Ltd
Imperial Oil Foundation
Inteqna
Interior Wood Ltd.
Jackie Palmer Distributors
Jardine Lloyd Thompson Canada - Social Fund
Jayman Realty Inc
Jim and Vicki Wilson Family Fund



John Powell Professional Corporation
Jubilee Accounting Services Inc
Kearns Hunt & Hrach Dental Care
Keller Equipment Supply Ltd
Knox Presbyterian
Knox United Church
Lakeview United Church Ladies
LeClair Thibeault Barristers & Solicitor
Legacy Estates Charity Club
Leo Boutique Fashion Inc
LMEC Consulting Corporation
Lynnwood Drugs
Maitland Family Foundation
Masonic Elbow River Lodge #180
Mathewson Oils Limited
Maurice W. McCaig Fund
Max Beugin Legacy Fund
Mayfair Diagnostics
Meals on Wheels Association of America
Menno Gardens
Micro-Watt Control Devices Ltd
Morguard Investments Limited
Mount Royal University School of Business
N Murray Edwards Charitable Foundation
Nexen Inc.
Nexus Builder Group LP
Nickle Family Foundation
Nissan Canada Inc
North Star Chapter #34
Order of the Eastern Star
Olwen Priestnall Memorial Fund
Packers Plus Energy Services Inc
Paddy-Luke Fraternal Society
Patterson Ridge Bottle Fund
PCL Construction Management
Percy and Lois Cole Fund
Peter G Burgener Architect Ltd
Peters & Co. Limited
Petro-Canada
Petro-Canada Alumni Assoc.

Petro-Tech Heaters Ltd
Potash Corporation of Saskatchewan Inc
Private Giving Foundation
Proud Family Fund
R.J. Nobes & Associates Inc
RBC Capital Markets
RBC Foundation
RBC Royal Bank
Rebekah Lodge-Hillhurst #116
Remax House of Real Estate
Richard and Lynn Odland Fund
RMP Energy Ltd.
Catholic Charities
Rotary Club of Calgary West
Royal Canadian Legion #154 Ogden Branch
Royal Canadian Legion #264
Royal Canadian Legion #284
Royal Canadian Legion #285
Royal Canadian Legion #289 Millennium Branch
Rusticana Ranches Ltd
Samaritan Club of Calgary
Sanford Design Group Ltd
Savanna Energy Services Corp.
The Seaman Family Foundation
Shannon & Associates Engineering Ltd
Shell Canada Limited
Sherritt International Corporation
Show Kids You Care
Southland Denture Clinic Inc
St. Andrew's United Church
St. Laurence Anglican
St. Luke's CWL
Stebnicki + Partners Consulting Electrical Engineers
Suncor Energy Services Inc
T. Bowen & A. Roberts Professional Corporation
Techcord Consulting International Ltd
TELUS
Trinity Global Support Foundation

Trinity Women, St Barnabas Anglican Church
U of C Students' Union
UNITED WAY
United Way of Calgary and Area
United Way of Greater Toronto
United Way of Peel Region
United Way of the Lower Mainland
United Way Serving Saint John, Kings and Charlotte
Upside Engineering Ltd
UTS Energy Corporation
Vector Marketing Canada Corporation
W. de Silva Properties Inc
The Wawanesa Mutual Insurance Company
Wentworth Development Inc
Westbourne Hilltoppers
Western Coffee Shop
While Away Housesitters & Pet Care Inc.
William S Herron & Marjorie A Herron Charitable Foundation
William and Constance Topley Fund
Woodcliff United Church
The Young Family Foundation

INDIVIDUALS

Murray Aberdeen
Dorothy Adlard
Anwar Ahmad
Larry and Judy Aikenhead
Viola Akhurst
Ghalia Akkaoui
Mohammad and Jill Hefferton Alavi
Barry and Doreen Albrecht
Karen Alimohd
J D Allan and R M Allan
J Stephens and Marjorie Allan
Lisa Amonson
Susan Anderes
Betty Anderson
Karen Anderson
Hjordis Anderson



Miranda Anderson
Nancy Anderson
Lindsay Andreasen
Lorraine Andrews
Rita Andrews
Tracy Angel
Wendy A Anton
Linder Armitage
Pauline Ashley
Irene Askew
Henry Astle
Anton and Nelly Audretsch
Talwinder Aujla
James Ayotte
Sheila Bachynski
Sylvia Bader
David and Marie Baer
Ken and Bernice Baher
Bonny Baird
Valerie Balazs
Claude Baril
Katharine Barlow
Elaine Barnes
Calvin Basaraba
Beverley Bateman
Edward Bauer
John and Catherine Beal
Nadine Beasley
Gertrude Beaulieu
Leroy and Janice Beavers
Don and Catherine Bedford
James Beebe
Betty Belitz
Wade Bell
Marilyn Benner
Sean Berg
Lorenz Berner
Trevor Berryman
Reyes Bertolin
Edward W Best
Larry Betts
Joseph Bicek
Darcy Biever
Joan Biles
Len and Esther Birkenes
Mary Bittner
J R Blackburn
David Blackman
Peter and Veronica Blanchard
Lise Blanchard
Betty Blanchette

Jean Blayney
Donald and Carol Bloor
Gordon and Heather Bodie
Richard Bodnar
Linda Bolstad
David J Boone
Hattie Boothman
Marion and Romualds Boreiko
Cecily Bornemisza
Mike Borrelli
Alice Borrowman
Nitin Borse
Mary Boser
John Bowes
Rita Boyd
James Boyle
Shirley Bracko
Margaret Bradley
Jim Brady
Keren Brandenburg
Yvette Branker
Mark Brewster
Lorna Bridarolli
Pat Brocklebank
Frank Broeke
Kim L Brooker
Janice Brooks
Eileen Brown
Jim Brown
Ken Brown
Peter Brown
John E Bruce
Kenneth Bruce
Dayle Bruce
Curtis and Barbara Bruggencate
Lawrence Bryan
Angus Buchanan
G J Buehning
Steven and Myrila Bulman
Doris Burak
Angie Burgel
Gerald and Sheila Burke
Margaret Burmeister
Peter and Mary Burns
Sharon Burton
Brad and Elaine Butler
Eileen Butler
Rob and Lisa Byers
Michael Cain
Robert and Georgia Cairns
Keith Caldwell

Neil Camarta
Frank and Terry Lynne
Campanelli
Alex Campbell
Donald and Olive Campbell
Amelia Campbell
William and Vera Carroll
Ernie W Carter
Melissa Carter
Graham Carty
Thomas and Margaret
Cascadden
BR and RJ Castle
Barbara Castle
Alex Catchpough
David H Cathcart
Janet I Caverhill
Dorothy A Caves
Remi Cayer
EM and EH Chapel
Eugene H Charko
Brenda Cherry
Marilyn Chevrefils
Eleanor Chmilar
Maie Chow
Violet Chow
Lily Chow-Kam
Brian Christensen
Anne Christopoulos
Frank Chudik
Stephen Chung
Anthony and Ida Cioni
Terry Ciotka
Kevin and Patricia Clark
Kevin Clark
Sherral Clark
B A Clarke
Frances Clarke
Wendy Clemens
Tyler Cleveland
John Coats
Bryan Cockburn
Allan Cole
Lorraine Collings
Ethan S Compton
Kathleen Conacher
Virginia Cook
Kimberley Cook
Peter and Betty Cooper
Patrick Cooper
Brenda M Corbett



Margaret Corry
Melanie S Cory
Dave Cowan
Aline Cox
Peter Cox
Mardelle Craven-Robson
Paulette Crawford
Ralph R Cross
Doreen Cross
John Crossley
John Cufflin
William J Cummer
Leslie Cuning
Janice M Curtis
Tadeusz L Dabrowski
Tom Danshin
Harold Davenport
Melissa David
Ruth Davies
Patrick E Dawson
Grant Day
Maureen A De Sorcy
Lorraine Demosky
Hans and Helen den Boer
Susan den Boer
Jack J Denholm
Anne Denson
K Foon Der
Fay A Dersch
Barry Devolin
Yvette Dewis
John and Correen Dick
Lillian Dick
Achibald Parker Dickson
Margaret A Dickson
Elaine M Dickson
Peter Dickson
Colleen Diehl
Rosalie A Diesen
Grace Dillabaugh
Katherine Dimoff
Cynthia DiStefano
Bryan Doan
Marion Dobberthien
Lillian Donnelly
Lloyd T Dooling
Cindy Down
Ann Dowse
Trevlyn Dragseth
Nel Dragt
Cal Drouin

William Drummond
Michael and Susan Duckett
Marguerite Duckworth
Helena Dueck
Maria Dueck
Rosemarie Dueck
Frank Duff
George G Dunbar
William Dunbar
Laura Duncan
David and Roxanne Dunlop
Donald A Dunsire
Gisela Durlacher
Lorna Earl
Jane E Ebborn
Mebs Ebrahim
Sandra Edgar
Margaret Elkins
Beverly D Ellefson
Jane England Abbott
Marion Enta
Wes Epp
J and H Evaniew
Rodney and Donna Evans
John Ewanek
Barry Exton
Dennis and Theresa Fairbairn
Loren Falkenberg
Jillian Fan
Brian Farewell
Chuck and Pat Faulkner
Rod Fauvel
Warren Fenton
Janis M Fenwick
John and Vera Ferrara
Thelma Ferris
Barbara Fischer
Duane Fischer
Bonnie Flick
Florence Fluery
Frances J Fontaine
Liz Fontana
Eileen Forbes
Ernest and Barbara Ford
Scot and Fay Formanek
Dorothy Forrest
Sarah Elizabeth Foster
Thomas R Foster
Pat Frank
Josephine Frantz
Larry and Sharon Fraser

Ivan T Freeborn
Paul Frenette
Tony and Liz Fricke
Joel Friley
Maria Fritz
Aron Funk
Ronald and Kathy Gagnon
Richard and Marie Gallant
James and Bernice Galloway
Nancy Garagan
Carole Ann Gardy
Murray and Elizabeth Gartner
Hugh and Patricia Gaudet
Paul Gaumont
Shirley M Gaura
Gertrude Gibson
Edward E Gilbert
Isobel M Gill
Dorothy Girling
Nicholas Gnida
William and Gillian Godfrey
Clare Goetz
Gail Goldsmith
Michael Gomery
Duncan and Deborah Gordon
Sheila L Gordon
Ina Gordon
Glenna Gorrill
Harry Gould
Jean-Christophe Goulet
Robin and Joan Gourlay
Donald Gow
W Christopher Graham
Jean Graham
Betty Grant
T Kim Grant
Glenn and Terry Graversen
Tom Gray
Diana Gray
Pamela M Grigg
Henderikus (Rick) J Grol
Ben Gross
David Gross
Dr Juliet Guichon
Brian Guichon
Carolyn Guichon-Pearce
Eileen Gukert
Margaret Gulliver
F L Gundry-White
George A Haas
Bernhardt and Lore Haberl



Georgette Habib
Leann Hackman-Carty
Fay J Hadley
Ernie Hagel
Patricia Haig
James Haliburton
Nora Halladay
Tammy Hallquist
Mervin Halvorson
Dora M Ham
Evelyn Hamilton
Henry and Jeanne Hammer
Otto Hammer
Michelle Hanley
Patricia C Hanson
Warren Harbeck
Kenneth Harbour
Alice M Harpell
The Right Honourable
Stephen Harper and
Mrs Laureen Harper
Marion Harris
Margaret E Hart
Gordon Hasick
Richard Haskayne
Kathleen Hatfield
Wesley and Kathleen Hatlelid
Robyn Hauck
Shawn Hauck
Christina J Havard
Linda S Haymour
Roger and Doris Haynes
Albert W Haynes
Vern Healy
While Away Housesitters and
Pet Care Inc
Lesley A Hefferton
L M Heming
John R Hemstock
G and Helen Henderson
Carney G Henderson
Judy Henderson
Cheryl Lyn Hendry
Richard Henson
Cheryl Herzog
David and Jill Hesse
Ron Hewton
Beverley and Harold Higgins
Farida Hirji
Bev Hnetka
Phillip Ho

Helen Hoffart
Debra J Hoffert
M Tim Hohm
Linda Hohol
Elana Holland
Neil R Holling
Walter J Holloway
Pastor Corliss and Caroline
Holmes
Robert Holscher
Barbara J Homer
R Lynn Homer
Jo Homulos
Maureen Honey
Kenneth Horne
Ruth Horney
Tuck-Yuen How
Cathy Howarth
Joe and Irma Huba
Donald and Joan Hudson
Alan Hughes
Pat Hughes
Bernard and Johanna
Hulkenberg
Steve Hull
Harriet Bernice Humphrey
Leonore J Hunt
Nina Hunt
Joyce W Hunter
William Hutchinson
Patricia Irwin
Bruce Jacobs
Frances Jacobson
Jennifer M James
Henry and Joanne Jansen
Ted and Enid Jansen
James and Margaret Jauch
Robert Jeanneault
Allan Jenkins
Laverna Jennings
Hubert Jepps
Jean J Jepson
Parin Jivraj
Francis D Johannson
Elaine C Johnson
Barry R Johnson
Gary Johnson
Glynis Johnson
Judy Johnson
Philip Johnson
Dorothy F Johnston

Cathy Jones
Stephen Jones
Andras Joo
Elinor Jordan
J Marion Jorgensen
Nelize Joubert
Carolyn Jurek
Tenzin Lhamo Kabar
Robin B Kadz
Diana Kailly
George Kaiser
Shirley C Kamp
Conrad Kathol
Walter Kawiecki
Joan and F Brian Keeling
Ron Keen
Lorne Kelly
P Donald and Catherine
Kennedy
Diane P Kepford
Ameer M Keshavjee
Derryl W Killan
Brian and Nina Kilpatrick
Patricia Kincade
Ben and Fran Kinch
Wendy King
Valerie Kinnear
Merle Kirkpatrick
Patti Kiselyk
B Kitagawa
S A Klassen
Colleen Klassen
Joyce Klassen
Ken Klatt
Anne Kleffner
Dorothy Klovon
Robert Knipe
Don Koenig
Hideko Koizumi
Sophie Kok
Janine F Koller
Deborah Korpach
Johanna Kosowan
Anthony Kovach
Marta Kralovic
Kristin Krause
Anne Krigovsky
Tim and Eloise Krisa
Michelle Kromplak
J L Kruger
John Kuhn



Frank Kuri
Anneke Kurpershoek
Reina LaBossiere
Dora Y Lam
Anthony Lambert
Boyd Lampman
John and Stella Langton
Doris Latouche
Ellen Lee
Raymond Lee
Mary E Lefebvre
Angus and Theresa Leitch
William Leonard
Helen Leppard
Helen Leslie
Joan Lessey
Patrick Leyne
Pamela Lillywhite
Barbara J Lindeburg
Monica Lis
Rose E Lister
Jean C Lockhart
Kathleen Loeb
A D and Robina Logan
Elizabeth Logan
Cynthia Lomheim
Francine Longpre
Arnald and Donna Loucks
Gary Louie
Eugenie Love
Margaret Ludlow
Cirila A Lynch
Betty B Lyons
Kathy Ma
Sally Ma
Frederick and Eleanor
MacDonald
James and Shirley
MacDonald
Mary Jo MacDonald
Shannon MacGillivray
Cindy MacLaren
Andrew MacNair
Heather Macpherson
Barbara Maddocks
Qaiser Mahmood
Brian Mahoney
Susan Mahoney
Rhyl Maiklem
Michael Maitland
Peter Maitland

Manu and Usha Makwana
Diane Malboeuf
Norma Male
David and Ann Mallory
Gino L Mangone
J and CT Man-Son-Hing
Rhonda Marbach
Joan M Marble
Nellie Marchand
Eunice Markert
Nancy Marlatt
William and Elinor Marshall
Beverlee Marshall
Gary W. Marshall
Mavis Marteinson
Jodie Martien
Ann A Martin
Joan B Martin
Luc Matter
Kris Matthews
Geoffrey Matthews
Herb Matthews
Larry and Margaret Mazurek
Margaret E Mazurek
M Ann McCaig
Luisa McCann
Dawn McCartney
Sandra A McConnach
Jill McDavid
Donald W McDonald
Amelia McEachern
James and Valerie McFarland
R Bruce McFarlane
William H McGregor
Elona Z McIlreath
Allan McIntyre
Bernice McIvor
Donald and Jean McKenzie
J C McLean
Bob McLellan
Jean McLeod
Elaine McMurtrie
Alexander McNab
Robert McQuitty
James and Moira McRae
Robert and Shirley McTaggart
Lucille McTaggart
Dolores E Meckleborg
Paulina Medori
Cory Meeuwissen
Irene Meier

Randy and Mary Meikle
Chantal A Meloche
Brenda Mercier
Glen and Betty Mertens
Margaret L Metcalfe
Murray Michols
Anka Mihaila
Mikulski Family
Loretta Helen Miller
Karl Miller
Lynda Miller
Aina Miltins
Marie L Mislan
Francis Molyneaux
Christina Mombourquette
Francois and Danuta
Montandon
Mark Montemurro
Peggy L Montgomery
Elaine Montgomery
Terence and Annabelle Moore
Janet Moore
Wayne Moore
Eva M Moran
William Moreland
Wesley Morningstar
Emma A Morrison
Kim Morton
Bill and Donna Mouck
Terence and Patricia Moynihan
Susan Mumby
Robert and Janis Mummery
Doug and Maire Muncaster
Patricia J Munro
Krista Munsie
Thomas and Angeline Murray
R David Murray
Yvette Mushinski
Margaret E Myroon
Eugene Nagai
Calvin L Nagel
Helen Namespetro
Sheila Navrady
Orland E Nelson
David R Nelson
Garth and Fern Neuls
Ruth Newell
Dorothy Nicholl
Yuen Cheong Nip
Sandie Nixon
Robert J Nobes



Klaus Nopper
Doug Normandin
Ivan Novlesky
Brenda O'Brien
Shirley O'Donoghue
Pastor Eldon and Mrs Marian
Ohlinger
Donald G Olafson
Kenneth Olson
Faye Osiowy
John C Osler
James and Diane Ostler
Rob and Jane Oswald
Debbie Owen
John Owen
Louise Pajot-Phipps
Kathleen Palese
Gordon and Sherry Palmer
Joyce M Palmer
Linda Palumbo
Rita Pamplin
Antonios and Vassiliki
Papantoniou
F D Parker
Linda Parks
Dorothy E Parslow
Patricia Parslow
John Pastega
Doreen Paterson
John G Patterson
Ruth W Pattie
Gerald Patwell
Mo and Trudy Pavan
Anne Pawelek
Bernard A Payne
Alice V Payne
Maureen M Pearson
Barbara Peddlesden
Sidney Pedersen
Willy Pedersen
Laurie and Velda Pedrotti
David Peever
Muriel Pegoraro
Christine Pelto
Russell and Teresa Penner
Geraldine Perasalo
Thomas Peregovits
Grace Perrement
Warren and Marion Peterson
Veronica M Petri
Matt and Tara Petrie

Arnold and June Pettersson
John and Elaine Phillips
Ross F Phillips
Debra Phillips
Mark Phipps
Doris Pickering
Charles and Donna Pieper
Raymond Pieper
Corwin D Pine
Helen V Pishak
Walter Pishak
Jeff and Jayne Pivnick
David and Adelle Pogue
Mary Pope
Kip Popowich
Maureen Poscente
Christopher S Potter
Hazel M Powell
William and May Pringle
Irene Pritchard
C Prowse
Ivan and Margaret Purdy
Suniel Raj Puri
Bette Purves
Shelagh Jean Quinn
Emma Quon
Thomas Raedler
Robert Rakochev
Jack Ramsey
Flora Rankin
Hiralal and Daksha Rash
Eric and Juanita Rasmussen
Susan Rasmussen
Asim Rauf
Marie J Redwood
Margaret Reed
Ronald and Jean Refvik
Ross Reid
Robert and Betty Reimer
Luverne F Reishus
Barbara H Revay
Agnes Rewucki
Meghan Rhine-Roszler
Maureen Ribi
Glyn and Beverly Richards
Maxine E Richardson
Nadine J Rippon
George and Hazel Ritchie
Julie Ritchie
Bill Roberts
Ena Roberts

Marvin E Roberts
Maxine Roberts
W G Hugh and Lenore Robinson
Blaine A Robinson
Kathryn Robson
Mary Robson
Nicholas Roczkowsky
Tony C Roest
FS and JE Rogers
Judith A Rogers-Dundas
Steve Romanchuk
Lloyd Romfo
Ruth Romney
Murray and Nancy Rose
Yvonne Routledge
Patricia M Rowley
Mary L Rozsa de Coquet
Leonard F Ruggins
Llana Samaroo
John and Christine Sander
Tim Sander
Marilyn J Sanders
Elsie Santucci
Thomas P Saretsky
Sheila M Sartorio
Barbara Saruga
Evelyn H Saunders
Lucy M Schaefer
Barbara Schaefer
Colin Schielke
Nancy L Schiller
Fred and Anne-marie
Schlotzer
William and Erna Schmidt
Rachel Schmidt
Esther Schmidt-Brown
Katherine Schnell
William and Glynis Schoenfeld
Lloyd Schulte
William G Schultz
Richard Schulze
Ryan Schur
Betty Lou Schurr Richards
Shala C Schweitzer
Roberta Schweitzer
Scibor Family
Jennifer Scott
Lorraine Scott
Ronald E Seamans
Stanley Senger
Dennis and Betty-Anne



Shandruk
Mary Shankel Lore
Dan Shannon
Jeanne Shaw
Ken Shaw
John and Maureen Sheane
Carol Shelstad
Joseph Shenher
Paul Shenher
Mary G Shepherd
Lita L Shepherd
Shirley B Sheppard
James and Gloria Sherbut
Dorothy D Sherling
Ruth T Sherwood
Chuck and Louanne Shultz
Ray Shurmer
Paul Sidorsky
Richard and Mary Jane
Sillitto
Rose Silzer
Gaetan Simard
John D Simmons
HP and CJ Simon
Barry D Simpkins
Jocelyn Simpson
Michael Simpson
Michael Sine
Claus Sitzler
Frances A Slezinski
Tillie Slick
Fred Sloan
Robert Smallwood
John Smiley
Carol Smith
James Smith
Jessie Smith
Kerry Smith
Susan Smith
Barb Smits
Thomas W Snowdon
Marg & Ron Southern
Judith Anne Spenard
Jane Spence
Mary Spence
Robert Spittal
Dave Spratt
Leo Sprinkhuysen
John and Gloria Spronken
Andrea R Spronken
Janice Sproule

Mary Ellen Stann
Ann Staples
Cedric Stapleton
Judy Stark-Vincent
Wayne Steele
Frances Steeves
Andrea and Annie Steinhauer
Neil and Donna Stephenson
Clifford A Stewart
James C Stewart
Annie Stewart
David Stewart
Robert P Stone
Roderick and Barbara-Ann
Straight
Sue Strang
Francine Stratton
Pauline Stratton
Harry and Noreen Stroud
Betty Stryk
Alfred and Sharon Stuart
Rick Sukovicff
Deborah Sung
Cheryl Sutherland
Gene and Anne Swain
Herbert and Ellen Swanston
William and June Swinton
Leah Syrota
Lori Tahmazian
Gordon and Beverley Tallman
David Tavender
Douglas and Helen Taylor
Elizabeth Taylor
NW Taylor
William Taylor
Ann Teekasingh
Willemina Terberg
W and Susan Tersmette
Barbara Theedom
Linda Then
Lorna F Thomas
David and Joanne Thompson
Robert and Elizabeth
Thompson
Hilda E Thompson
Jean Thompson
Carol Thonger
Robert and Eileen Thorburn
J D Thorson
Don and Norma Thurston
Kristin Thygesen

Fairlie J Timmons
Johanna Tipping
Jennie Z Tkach
William and Colleen Tobman
Verne and Carol Toews
Marie Therese Toupin
Richard Towers
Marg Trawick
Bruce and Debbie Trevitt
Richard Trombinski
Mary Trudel
Ophelia Tsui
Teresa Tsui
Cindy Tuer
Helen Turgeon
Theodore and Ruth Twack
Tybulewicz Family
Terry and Linda Tyler
P Tzozos
Clara Ulrich
Robert and Nancy Vair
Peter and Peggy Ma Valentine
Carol Van Besouw
Doug van den Brink
Bart Van Staalduinen
Michael Vandenbergh
Joanne Vankeimpema
John Van-Wees
Vish Venkatraman
Edwardo and Zulmira Vicente
David and Barbara Vincent
Doug Virginillo
Jagdeep Virk
Jane Wachowich
W J Waddell
Heather Waddell
Myrna Waddell
Stephanie Wagenaar
Peter and Cheryl Waite
Florence L Walasko
Margaret O Wallis
Hayward and Dawn Walls
Frank Walsh
Robert Walsh
Shannon Walsh
Beverley J Walters
Leonard and Margaret Wardle
Joan Warke
Douglas and Marilyn Warne
Scott Washington
Merle Watkins



Gary and Elaine Webb
Sylvia Webb
Stan Weber
Ted Wegio
Marguerite E Weir
Alvin Weiss
Brenda Weiss
Gwen P Westcombe
Jim White
Penelope White
Kevin Whitehead
John E Whitworth
Bruce E Williams
Trevor and Eleanor

Williams
Allan Willson
Elizabeth Wilson
Marion M Wilson
Vicki Wilson
Beth Wiwchar
Ralph Woessner
Dianne Woima
Clinton Wolfe
Mark and Colleen Wolff
Joseph and Angelina Wong
Amy Wong
Jaime Wong
Phyllis Wood

Barbara A Wright
Sheila Wright
Pamela J Wudel
Joseph and Joyce Yanchula
George Yeaman
Arthur and Daphne Yeske
E Penny Young
Murray Young
Sally Young
Brian Younger
Theodore E Yuzyk
Ingeborg I Zach
George Zahary
Cyril and Debbie Zupan

**TO THE MANY WHO HAVE CHOSEN TO REMAIN ANONYMOUS,
PLEASE KNOW HOW MUCH WE APPRECIATE YOUR THOUGHTFUL INVESTMENT
IN OUR ORGANIZATION AND SERVICE TO OTHERS**

*We thank all who chose to give a gift to Calgary Meals on Wheels.
We truly appreciate your support*

If we have missed your name, we deeply apologize and ask you to contact our Development Office